



Garden[®]
L E I S U R E
— Hot Tubs



Discover relaxation with our full range of
energy efficient Hot Tubs







Treat your BODY...
Treat your MIND...
Treat your SPIRIT...

Home Is A Destination

Home is where we set the body and mind at ease. To relish in the small victories of the day. To recover from the resistance we face throughout our journey.

Home is a place where we find our core. To release stress and tension.

To melt away and find ourselves again.

Home is a safe place to heal from the unexpected injuries we face.

It's where we grow strong again. It's a place where we strengthen and improve ourselves so we can go back into the world ever ready.

Home is where you'll find your Garden Leisure Hot Tub® waiting for you.

With the ancient art of water therapy, you can ease tension and stress, improve circulation, soothe sore muscles, and treat the aches of everyday life.

Home Is A Destination	2 - 3
Health Benefits & Wellness	4 - 5
Garden-334L	6 - 7
Garden-642L	8 - 9
Garden-742	10 - 11
Garden-680L	12 - 13
Garden-780	14 - 15
Garden-696L	16 - 17
Energy, Efficiency & Features	18 - 19

Unlock the power of hydrotherapy



Hydrotherapy is the modern version of water therapy, an ancient art that dates back to the hot springs in Greek, Roman, Egyptian, and Japanese culture. People traveled to the legendary hot springs from all over to find relief from a variety of ailments. Now, you can relieve stress, tension, and pains in the comfort of your own home.

Health Benefits & Wellness

Soothe.

Melt away the tense and busy energy of the day. Research shows that the warm water in a hot tub reduces stress and relaxes your body and mind

- **Decrease Blood Pressure** – Your Garden Leisure Hot Tub® improves circulation and decreases the workload of the heart
- **Reduce Stress Triggers** – Warm Water Immersion radically diminishes the stress triggers in the central nervous system



Soothe.



Relax.



Recover.

Relax.

Hot water has a variety of benefits to the mind at different stages of the day. It increases blood flow in the brain as well as the body so you can enhance creativity and relax for better sleep

- **Boost Cognitive Activity** – Increased blood flow inside the brain boosts mental stimulation, allowing you to make clear connections for improved memory and creativity.
- **Boost Restful Sleep** – When it's time to unwind at the end of the day, warm water helps create a restful state of mind

Recover.

Hydrotherapy boosts recovery time from aches, pains, and injuries, according to physical therapists. This makes them a dream come true for those with arthritis, back pain, diabetes, as well as athletes who are recovering from rigorous workouts

- **Alleviate Sore Muscles** – Warm water and increased blood flow helps to soothe knots and reduce inflammation, making hot tubs a perfect match for those with an active lifestyle
- **Stimulate Healing** – Warm water allows for oxygen, blood, and nutrients to flow throughout the body, stimulating the natural healing process



Garden-334L



Room
for 3
People



34 Jets



2 HP
Dual-Speed
Pump (1)



Your purchase includes a thermal locking insulated cover and initial filter. Steps not included.

The **Garden-334L** is designed with the same attention to comfort and detail as the larger models in the range. Nothing is compromised !



Garden-334L

Dimensions	165 cm x 214 cm x 75 cm 65 in. x 84 in. x 29.5 in.
Jet Count	34 Jets with Stainless Steel Trim
Pump	(1) 2 HP Dual-Speed
Water Capacity	175 Gallons / 796 Litres
Dry Weight	301 kg
Filled Weight	1,334 kg
Amperage	16 amp
Heater	2.0 kW Stainless Steel
Filter	35 sq. ft. / 3.25 m ²
Cabinet	Maintenance Free



Cabinet Colours

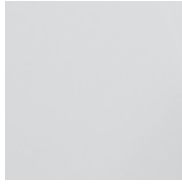


Charcoal

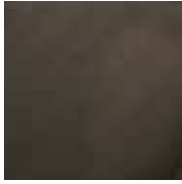


Brown

Acrylic Colours



Alpine White



Midnight Canyon

Additional Features Included

- Room for 3 People Including Full Body Massage Lounger
- Full Foam Insulation
- Adjustable Cascading Waterfall
- Underwater Multi-Colour changing LED Lighting
- Exterior Multi-Colour changing LED Cabinet Lighting
- 2 Backlit Pillows
- Intuitive Digital Controls with LCD Panel
- Ozone Water Care System
- Locking Insulated Cover



Warranty

The manufacturer's International Limited Warranty covers the following areas: 5-Year Structure, 2-Year Shell/Surface, 2-Year No Leak Plumbing, 2-Year Component, 2-Year Synthetic Wood Cabinet. For additional information on the warranty, please visit gardenleisurehottubs.com.

Garden-642L



Room
for 6
People



42 Jets



2 HP
Dual-Speed
Pump (1)



Your purchase includes a thermal locking insulated cover and initial filter. Steps not included.

When you step into the **Garden-642L** you immediately appreciate the space. Relax in the lounge or one of the multi level seats !

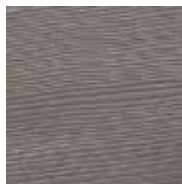


Garden-642L

Dimensions	214 cm x 214 cm x 92 cm 84 in. x 84 in. x 36 in.
Jet Count	42 Jets with Stainless Steel Trim
Pump	(1) 2 HP Dual-Speed
Water Capacity	275 Gallons / 1250 Litres
Dry Weight	361 kg
Filled Weight	2,137 kg
Amperage	16 amp
Heater	2.0 kW Stainless Steel
Filter	50 sq. ft. / 4.64 m ²
Cabinet	Maintenance Free



Cabinet Colours



Charcoal

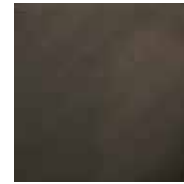


Brown

Acrylic Colours



Alpine White



Midnight Canyon

Additional Features Included

- Room for 6 People
- Full Foam Insulation
- Adjustable Cascading Waterfall
- Underwater Multi-Colour changing LED Lighting
- Exterior Multi-Colour changing LED Lighting
- 3 Backlit Pillows
- Intuitive Digital Controls with LCD Panel
- Ozone Water Care System
- Locking Insulated Cover



Warranty

The manufacturer's International Limited Warranty covers the following areas: 5-Year Structure, 2-Year Shell/Surface, 2-Year No Leak Plumbing, 2-Year Component, 2-Year Synthetic Wood Cabinet. For additional information on the warranty, please visit gardenleisurehottubs.com.

Garden-742



Room
for 7
People



42 Jets



2 HP
Dual-Speed
Pump (1)



Your purchase includes a thermal locking insulated cover and initial filter. Steps not included.

The **Garden-742** is an all seating model. Featuring a generous extra large sized footwell. It will comfortably allow 7 people to enjoy the hydrotherapy on offer!



Garden-742

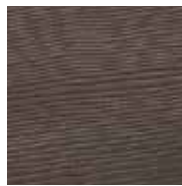
Dimensions	214 cm x 214 cm x 92 cm 84 in. x 84 in. x 36 in.
Jet Count	42 Jets with Stainless Steel Trim
Pump	(1) 2 HP Dual-Speed
Water Capacity	300 Gallons / 1364 Litres
Dry Weight	318 kg
Filled Weight	2,237 kg
Amperage	16 amp
Heater	2.0 kW Stainless Steel
Filter	50 sq. ft. / 4.64 m ²
Cabinet	Maintenance Free



Cabinet Colours



Charcoal

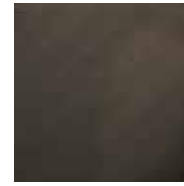


Brown

Acrylic Colours



Alpine White



Midnight Canyon

Additional Features Included

- Room for 7 People
- Full Foam Insulation
- Adjustable Cascading Waterfall
- Underwater Multi-Colour LED Lighting
- Exterior Multi-Colour Changing LED Cabinet Lighting
- 4 Backlit Pillows
- Intuitive Digital Controls with LCD Panel
- Ozone Water Care System
- Locking Insulated Cover



Warranty

The manufacturer's International Limited Warranty covers the following areas: 5-Year Structure, 2-Year Shell/Surface, 2-Year No Leak Plumbing, 2-Year Component, 2-Year Synthetic Wood Cabinet. For additional information on the warranty, please visit gardenleisurehottubs.com.

Garden-680L



Room
for 6
People



80 Jets



2 HP Dual-Speed
Pump (1)
2 HP Single Speed
Pump (1)



Your purchase includes a thermal locking insulated cover and initial filter. Steps not included.

Moving up the range we have the **Garden-680L**. Featuring additional hydrotherapy and lighting features. The perfect get away in your own garden!

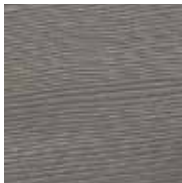


Garden-680L

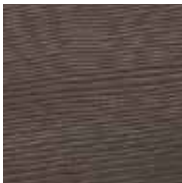
Dimensions	214 cm x 214 cm x 92 cm 84 in. x 84 in. x 36 in.
Jet Count	80 Jets with Stainless Steel Trim
Pump	(1) 2 HP Dual-Speed (1) 2 HP Single Speed
Water Capacity	275 Gallons / 1250 Litres
Dry Weight	371 kg
Filled Weight	2,096 kg
Amperage	32 amp
Heater	3.0 kW Stainless Steel
Filter	75 sq. ft. / 6.96 m ²
Cabinet	Maintenance Free



Cabinet Colours



Charcoal

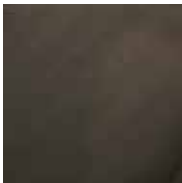


Brown

Acrylic Colours



Alpine White



Midnight Canyon

Additional Features Included

- Room for 6 People
- Full Foam Insulation
- Adjustable Cascading Waterfall
- Underwater Multi-Colour LED Lighting
- Exterior Multi-Colour Charging LED Cabinet Lighting
- 3 Backlit Pillows
- Intuitive Digital Controls with LCD Panel
- Ozone Water Care System
- Locking Insulated Cover



Warranty

The manufacturer's International Limited Warranty covers the following areas: 5-Year Structure, 2-Year Shell/Surface, 2-Year No Leak Plumbing, 2-Year Component, 2-Year Synthetic Wood Cabinet. For additional information on the warranty, please visit gardenleisurehottubs.com.

Garden-780



Room
for 7
People



80 Jets



2 HP Dual-Speed
Pump (1)
2 HP Single Speed
Pump (1)



Your purchase includes a thermal locking insulated cover and initial filter. Steps not included.

Turn on the air diverters in the **Garden-780** and enjoy a more intense sensation whilst taking advantage of the spacious corner seats!



Garden-780

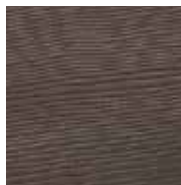
Dimensions	214 cm x 214 cm x 92 cm 84 in. x 84 in. x 36 in.
Jet Count	80 Jets with Stainless Steel Trim
Pump	(1) 2 HP Dual-Speed (1) 2 HP Single-Speed
Water Capacity	275 Gallons / 1250 Litres
Dry Weight	371 kg
Filled Weight	2,176 kg
Amperage	32 amp
Heater	3.0 kW Stainless Steel
Filter	75 sq. ft. / 6.96 m ²
Cabinet	Maintenance Free



Cabinet Colours



Charcoal

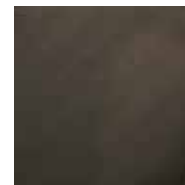


Brown

Acrylic Colours



Alpine White



Midnight Canyon

Additional Features Included

- Room for 7 People
- Full Foam Insulation
- Adjustable Cascading Waterfall
- Underwater Multi-Colour changing LED Lighting
- Exterior Multi-Colour changing LED Cabinet Lighting
- 4 Backlit Pillows
- Intuitive Digital Controls with LCD Panel
- Ozone Water Care System
- Locking Insulated Cover



Warranty

The manufacturer's International Limited Warranty covers the following areas: 5-Year Structure, 2-Year Shell/Surface, 2-Year No Leak Plumbing, 2-Year Component, 2-Year Synthetic Wood Cabinet. For additional information on the warranty, please visit gardenleisurehottubs.com.

Garden-696L



Room
for 6
People



96 Jets



2 HP Dual-Speed
Pump (1)

2 HP Single Speed
Pump (1)



The **Garden-696L** has a lounge that will immerse you into a world of stress free relaxation. Taking care of many parts of your body. Could this Hot Tub be the ultimate place to be at the end of each day!



Garden-696L

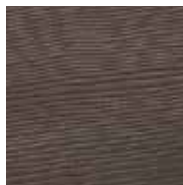
Dimensions	226 cm x 226 cm x 92 cm 89 in. x 89 in. x 36 in.
Jet Count	96 Jets with Stainless Steel Trim
Pump	(1) 2 HP Dual-Speed (1) 2 HP Spring Speed
Water Capacity	341 Gallons / 1550 Litres
Dry Weight	416 kg
Filled Weight	2248 kg
Amperage	32 amp
Heater	3.0 kW Stainless Steel
Filter	75 sq. ft. / 6.96 m ²
Cabinet	Maintenance Free



Cabinet Colours



Charcoal

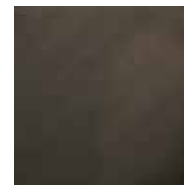


Brown

Acrylic Colours



Alpine White



Midnight Canyon

Additional Features Included

- Room for 6 People
- Full Foam Insulation
- Adjustable Cascading Waterfall
- Underwater Multi-Colour LED Lighting
- Exterior Multi-Colour Changing LED Cabinet Lighting
- 3 Backlit Pillows
- Intuitive Digital Controls with LCD Panel
- Ozone Water Care System
- Locking Insulated Cover



Warranty

The manufacturer's International Limited Warranty covers the following areas: 5-Year Structure, 2-Year Shell/Surface, 2-Year No Leak Plumbing, 2-Year Component, 2-Year Synthetic Wood Cabinet. For additional information on the warranty, please visit gardenleisurehottubs.com.

Energy Saving

Hot Tub Insulation

Every Garden Leisure Hot Tub® features full foam insulation, insulated cabinet panels and an insulating wrap. We also focus on potential heat loss through the base of the Hot Tub by fitting a purpose made tray that seals and provides protection against small mammals or rodents. The ultimate in energy saving giving you lower running costs.



Insulated Cabinet Panel



Insulated wrap with full foam insulation



Fully sealed base

Insulated Hot Tub Cover

In addition, your Garden Leisure Hot Tub® Cover is designed for maximum energy efficiency as it forms a tight insulated seal and locks in heat, saving you money on operating costs. All covers feature a full width insulated hinge seal that eliminates heat loss through the central seam. Garden Leisure Hot Tub® covers are tapered so water runs off and are made from durable, UV inhibited marine-grade vinyl. We include child-resistant safety locks as standard.



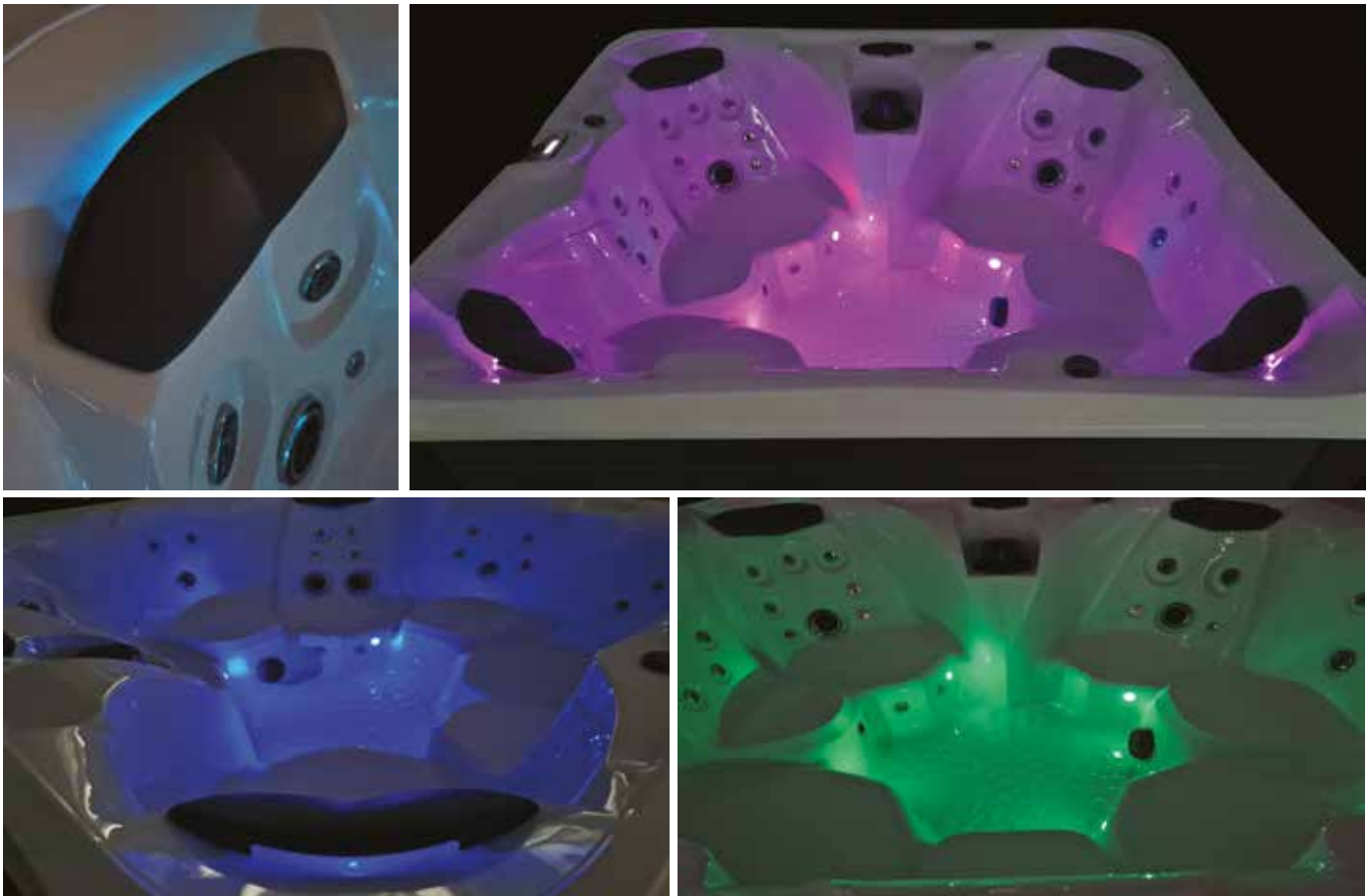
Insulated Hinge Seal



Cover Side Skirt

Hot Tub Lighting

Every Garden Leisure Hot Tub® features LED lighting to give a soft ambient glow for further enjoyment. Each Pillow is backlit plus we have placed either 4 or 8 individual underwater lights in the Hot Tub so the water is illuminated and the cabinet has an external LED light on each corner. Everything is connected together so you can choose between letting the system scroll through all the colour changes on its own, or you can decide on your favourite colour and pause on that!



Hot Tub Accessories

We have created a 36 page brochure of Hot Tub accessories to enhance your enjoyment. Select from Entry Steps & Handrails, Cover Lifters to ease the removal of the Hot Tub Cover, Maintenance Products, Water Treatment and Aromatherapy. We have everything you need!



36 page Accessory brochure



Life Co-Lift LX Side Mount Lift



Life Spa Handrail



Treat your BODY...
Treat your MIND...
Treat your SPIRIT...



© 2022 Alliance Trading, Inc. | All rights reserved.

